

# KAAT

Design: Barbara Widiningtias



**MG2901 KAAT 2-SEATER**

W	55"	140 cm	NW	77 lb	35 kg
D	34.5"	87 cm	GW	108 lb	49 kg
H	26.5"	67 cm	VOL	0.81 m <sup>3</sup>	
SH	15.5"	40 cm	PU	1 / box	
AH	23"	58 cm	COM	4.5 ly	

MG8764 Protective Cover KAAT 2-Seater

**LEGS**

Teak



PLANTATION TEAK  
SMOOTH SANDED  
F22

USA: All MAMAGREEN teak furniture is treated with a "teak shield" protective layer

ROW: Teak furniture is untreated

BACKREST  
POWDER COATING COLORS  
CATEGORY A - SAND  
Matt (Gloss 15%)/ Sand textured  
Application : Aluminum



WHITE  
F03



ANTHRACITE  
F09



BLACK  
F05



TAUPE  
F07

**CUSHION  
SUNBRELLA  
CATEGORY E - CANVAS  
Application : Cushion**



WHITE  
C49



TAUPE  
C50



COAL  
C54



BLACK  
C48



TEAK  
C53



MINERAL BLUE  
C52



MACAW  
C51

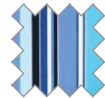


CORAL  
C98

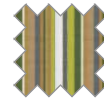
**CATEGORY F - STRIPES**



DOLCE MANGO  
C57



DOLCE OASIS  
C58



CAROUSEL  
C56

**CATEGORY G - SPECIALS**



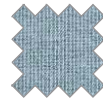
IBIZA  
C59



HERITAGE DENIM  
C61



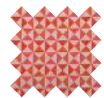
HERITAGE PUMPKIN  
C62



MINERAL BLUE CHINE  
C78



SUMMER TWEED  
C82



CORAL SPECTRUM  
C99

**CATEGORY H - SAILCLOTHS**



SAILOR  
C70



SHADOW  
C69



SEAGULL GREY  
C60